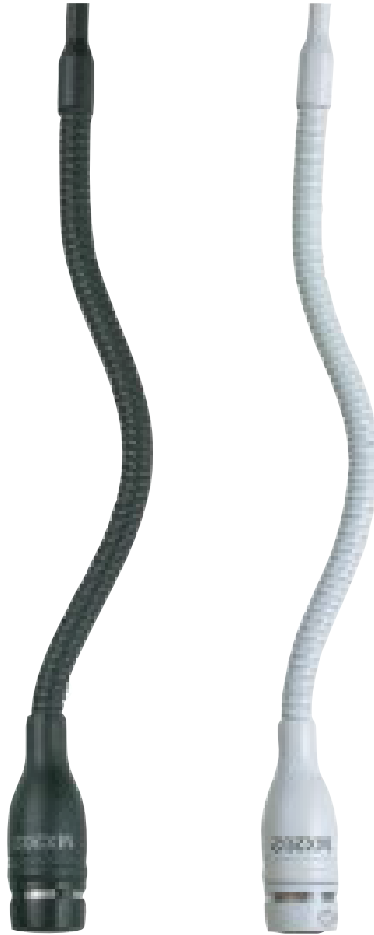


SHURE[®]

Microflex[®]

MX200 SERIES



MX200 Overhead Microphones

Shure Microflex® MX200 Series microphones are miniature electret condenser microphones designed for miking choirs and performance groups. They are typically suspended over the heads of the performers. Their high sensitivity and wide frequency range make them suitable for recording, as well as sound reinforcement applications. An attached 101mm (4 in.) gooseneck allows them to be easily aimed at the sound source.

Features

- Wide dynamic range and frequency response for accurate sound reproduction
- Interchangeable cartridges that provide a choice of polar pattern for each application
- White or black finish that blends unobtrusively with most surroundings
- RF filtering

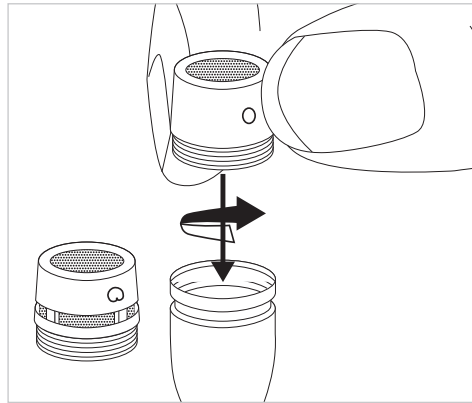
Model Variations

Microflex MX202 microphones are available in black or white with a choice of in-line preamplifier or plate-mount preamplifier.

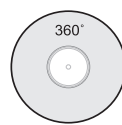
The polar pattern of the included cartridge is indicated by a model number suffix:

- /C Cardioid
- /S Supercardioid
- /N Cartridge not included

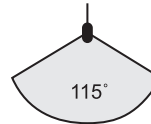
Interchangeable Cartridges



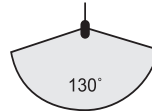
Microflex microphones use interchangeable cartridges that allow you to choose the polar pattern for different installations.



R183
Omnidirectional



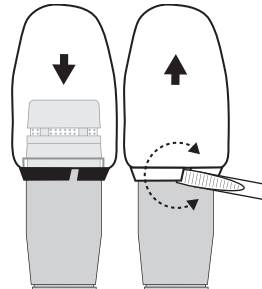
R185 Cardioid



R184 Supercardioid

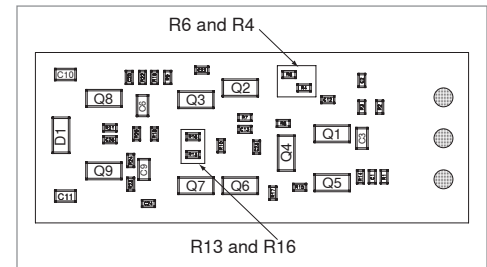
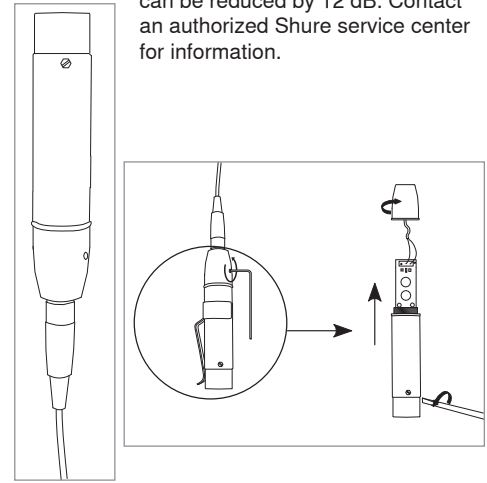
Snap-Fit Windscreen

- Snap into the groove below the cartridge.
- To remove, spread the gap with a screwdriver or thumbnail.
- Provides 30 dB of “pop” protection.



Preamp Gain

If necessary, the preamplifier gain can be reduced by 12 dB. Contact an authorized Shure service center for information.



GAIN SETTING		
	12 dB	0 dB
R6	10k	0 Ω
R4	10k	20k
R16	0 Ω	10M
R13	DNP	301 Ω

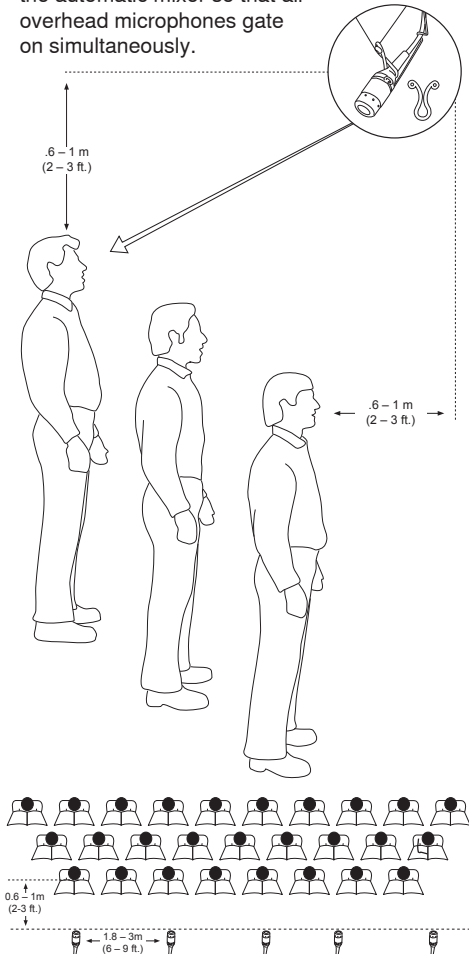
RFI Filtering

Important: Microphones must be used with the RK100PK preamp to optimize RF immunity.

Microphone Placement

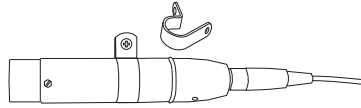
The microphone is most stable when the gooseneck is bent into a "lazy S" shape. Use the supplied hanging clip and heavy thread or monofilament fishing line to suspend the microphone at a specific location.

- For choir installations, hang a microphone 0.6 to 0.9m (2 to 3 ft.) in front of the first row, and 0.6 to 0.9m (2 to 3 ft.) over the heads of the singers in the last row. Aim the microphone at the singers in the last row.
- When miking groups that move or vary in size, use a boom stand and the supplied stand adapter.
- If four or more microphones will be open at once, an automatic mixer, such as the Shure SCM810 or SCM410, is recommended. Set up the automatic mixer so that all overhead microphones gate on simultaneously.



Permanent Installation

Installing the In-Line Preamp



Use the two supplied mounting clamps to hold the preamp in place on a wall or ceiling.

Ceiling Tile Installation

Remove plate-mount preamp connection.

1. Drill a 1/2 in. hole into the ceiling tile.
CAUTION: To avoid tile damage, use a 1/2 in. augur bit and drill very slowly.
2. Unplug the mini 4-pin connector from the preamp and feed the cable through the hole.
3. Place the rubber grommet, tip down, over the cable and position it to suspend the microphone at the appropriate height.
4. Fit the grommet securely into the hole. For 5/8 in. ceiling tile, use the supplied washer.
5. Reconnect the preamp.

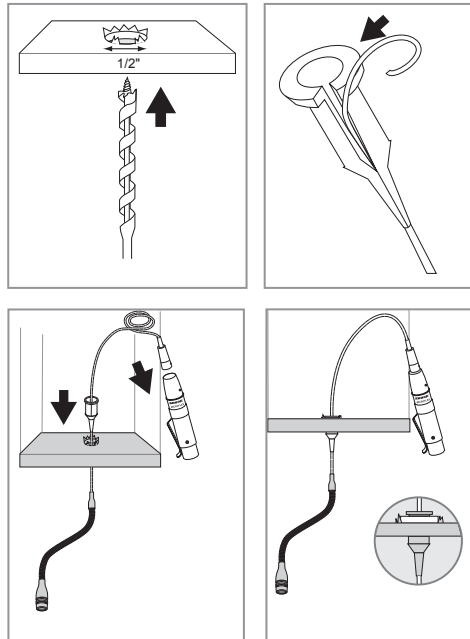
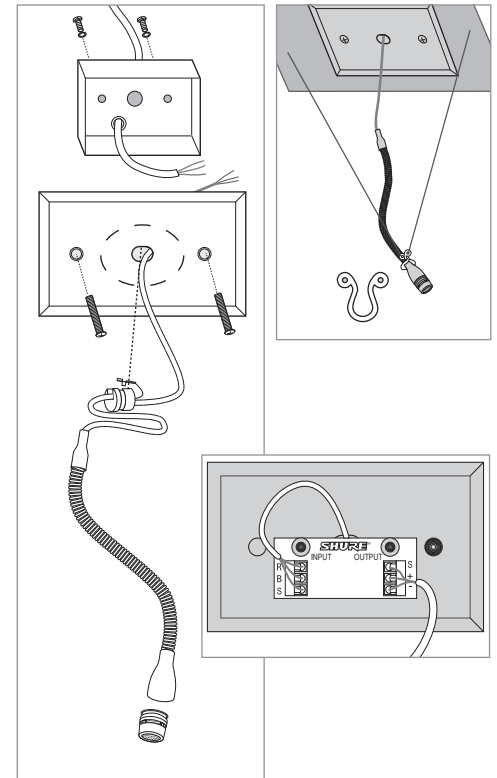


Plate Mount Preamp Installation

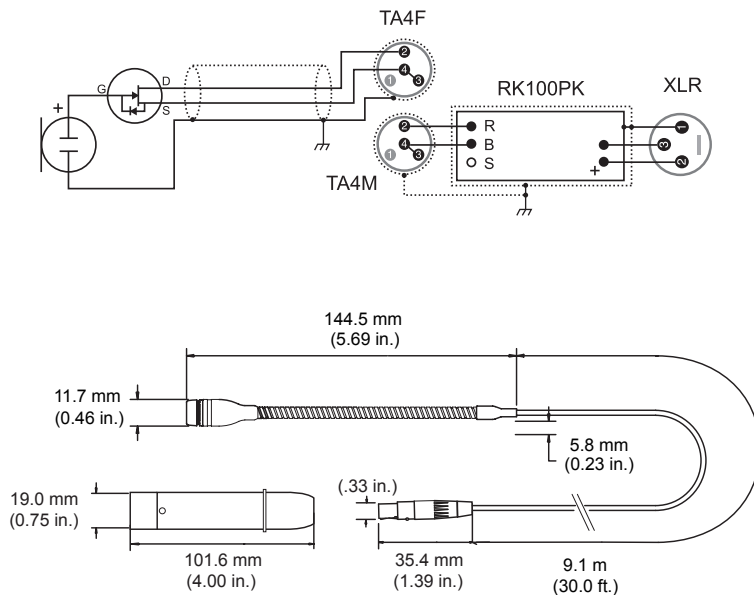
The plate-mounted preamp allows you to mount the preamp in an electrical box and use conduit to run cable through ceilings and walls.

1. Remove preamp housing by removing two philips head screws.
2. Remove knock-out from the hole in the center of the cover plate (if present).
3. Cut cable to desired hanging length, allowing for a 76 to 101 mm (3 to 4 in.) service loop.
4. Clamp strain relief around cable and insert strain relief into hole in plate.
5. Connect cable leads to input terminal block (B = Black, R = Red, S = Shield).
6. Using professional-quality, two-conductor, shielded microphone cable, thread output cable from outside of preamp through hole with black bushing.
7. Connect cable to output terminal block (Pin 2 = +, Pin 3 = -, Shield = S).
8. Reattach the preamplifier housing.



Specifications

Type Condenser (electret bias)	Dynamic Range (1 k Ω load at 1 kHz) 96 dB
Frequency Response 50–17000 Hz	Common Mode Rejection (10 Hz to 100 kHz) 45 dB minimum
Polar Pattern MX202B/C, MX202W/C: Cardioid MX202B/S, MX202W/S: Supercardioid	Preamplifier Output Clipping Level (1% THD) –6 dBV (0.5 V)
Output Impedance EIA Rated at 150 Ω (180 Ω actual)	Polarity Positive sound pressure on diaphragm produces positive voltage on pin 2 relative to pin 3 of output XLR connector.
Output Configuration Active balanced	Cable 9 m (30 ft)
Sensitivity (at 1 kHz, open circuit voltage) Cardioid: –35 dBV/Pa (18 mV) Supercardioid: –34 dBV/Pa (21 mV) 1 Pascal=94 dB SPL	Environmental Conditions Operating Temperature: –18–57 °C (0–135 °F) Storage Temperature: –29–74 °C (–20–165 °F) Relative Humidity: 0–95%
Maximum SPL (1 kHz at 1% THD, 1 k Ω load) Cardioid: 124 dB Supercardioid: 123 dB	Power Requirements 11–52 Vdc phantom, 2.0 mA
Equivalent Output Noise (A-weighted) Cardioid: 28 dB SPL Supercardioid: 27 dB SPL	
Signal-to-Noise Ratio (referenced at 94 dB SPL at 1 kHz) Cardioid: 66 dB Supercardioid: 68 dB	



Replacement Parts

Snap-Fit Windscreen (4 per package)	RK183WS (Black)
Preamplifier Kit, Plate Mounted, White (MX202BP and MX202WP)	RK202PK
Stand Adapter (MX202B and MX202W)	65B1752
In-Line Preamplifier (Black)	RK100PK
In-Line Preamplifier (White)	RK100PKW
Omnidirectional Cartridge (Black)	R183B
Omnidirectional Cartridge (White)	R183W
Supercardioid Cartridge (Black)	R184B
Supercardioid Cartridge (White)	R184W
Cardioid Cartridge (Black)	R185B
Cardioid Cartridge (White)	R185W
Strain Relief (MX202BP and MX202WP)	80A479
Clamp (MX202B and MX202WP)	80A476
Hang Clip	80B489

Optional Accessories

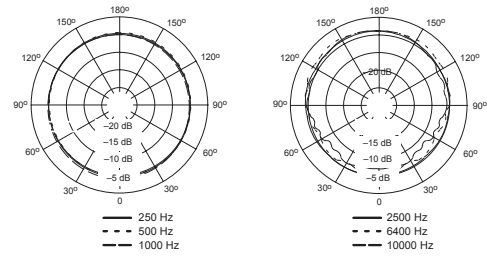
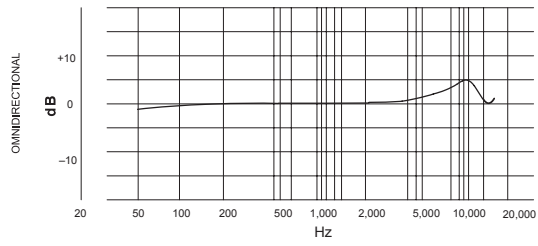
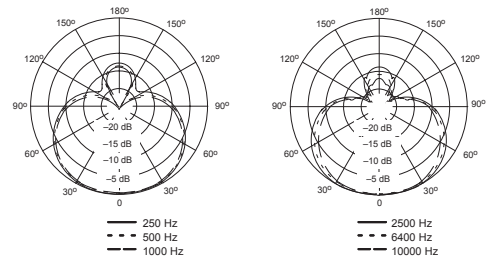
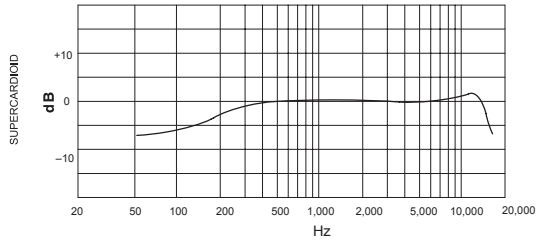
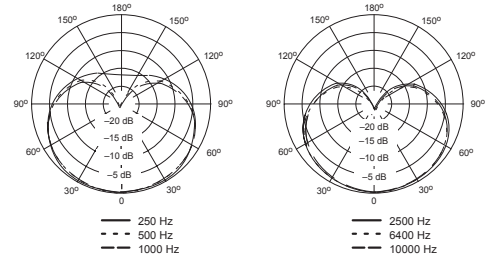
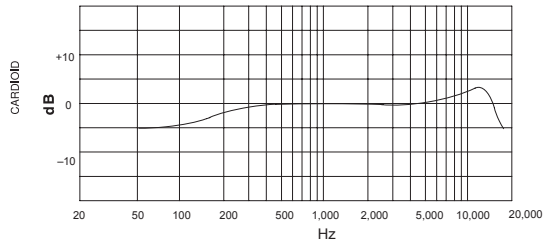
Desk Stand	A202BB
------------	--------

CERTIFICATION

Eligible to bear CE Marking. Conforms to European EMC Directive 2004/108/EC. Meets Harmonized Standards EN55103-1:1996 and EN55103-2:1996, for residential (E1) and light industrial (E2) environments.

The Declaration of Conformity can be obtained from:

Authorized European representative:
Shure Europe GmbH
Headquarters Europe, Middle East & Africa
Department: EMEA Approval
Wannenacker Str. 28
D-74078 Heilbronn, Germany
Phone: +49 7131 72 14 0
Fax: +49 7131 72 14 14
Email: EMEAsupport@shure.de





**United States, Canada, Latin
America, Caribbean:**

Shure Incorporated
5800 West Touhy Avenue
Niles, IL 60714-4608 USA

Phone: +1-847-600-2000
Fax: +1-847-600-1212 (USA)
Fax: +1-847-600-6446
Email: info@shure.com

www.shure.com

Europe, Middle East, Africa:

Shure Europe GmbH
Jakob-Dieffenbacher-Str. 12,
75031 Eppingen, Germany

Phone: +49-7262-92490
Fax: +49-7262-9249114
Email: info@shure.de

Asia, Pacific:

Shure Asia Limited
22/F, 625 King's Road
North Point, Island East
Hong Kong

Phone: 852-2893-4290
Fax: 852-2893-4055
Email: info@shure.com.hk